



# Andres Industries AG

protection for action

*Not just a Waterproof Case  
but a System Solution*



*for Microsoft and  
Apple tablets*

**IP67**

waterproof and dustproof, fully submersible 0.5 h in 1 m water depth

**MIL 810G**

withstands 26 drops from 1.22 m to concrete according to US MIL810G



waterproof loading

# Shell™ Cases

## The comprehensive system solution for Microsoft Surface Go and Apple devices

Shell™ is not just a product line of waterproof cases, it is a smart system solution for Microsoft Surface Go and Apple devices. The waterproof and shock-resistant housings were specifically designed for industrial use and are therefore extremely robust. They are compatible with the well-established RAM-Mount-System. Consequently, they can be mounted

anywhere. When equipped with the unique Car Cradle Connector they remain waterproof, while they are continuously being charged in the Car Cradle. Even in this configuration they still can be removed within seconds. This is especially appreciated by delivery drivers, rescue workers and all other professionals for who time is of the essence. Right from the

start we designed Shell™ as a system solution. They are therefore extremely expandable and convertible. There is no other housing system in the world offering such possibilities. However, if additional features are needed, we are at your service to develop tailor-made solutions.



## Colors, logos and customised housings

The Shell™ system is manufactured at our headquarter in Berlin. Therefore, we can change any detail according to your needs. We can produce cases in special colours starting from 200 units without extra charge. Logo prints for order volumes of 50 units and more are free of charge too. The interfaces on the back and at the sides of the case offer almost endless possibilities. Depending on the needs of your profession we can develop special brackets or connectors, so that your version of aiShell™ (not illustrated) or GoShell™ will fit your specific application perfectly.

\*Figure illustrates GoShell™

Designed for  
 Microsoft Surface



off-the-shelf colors

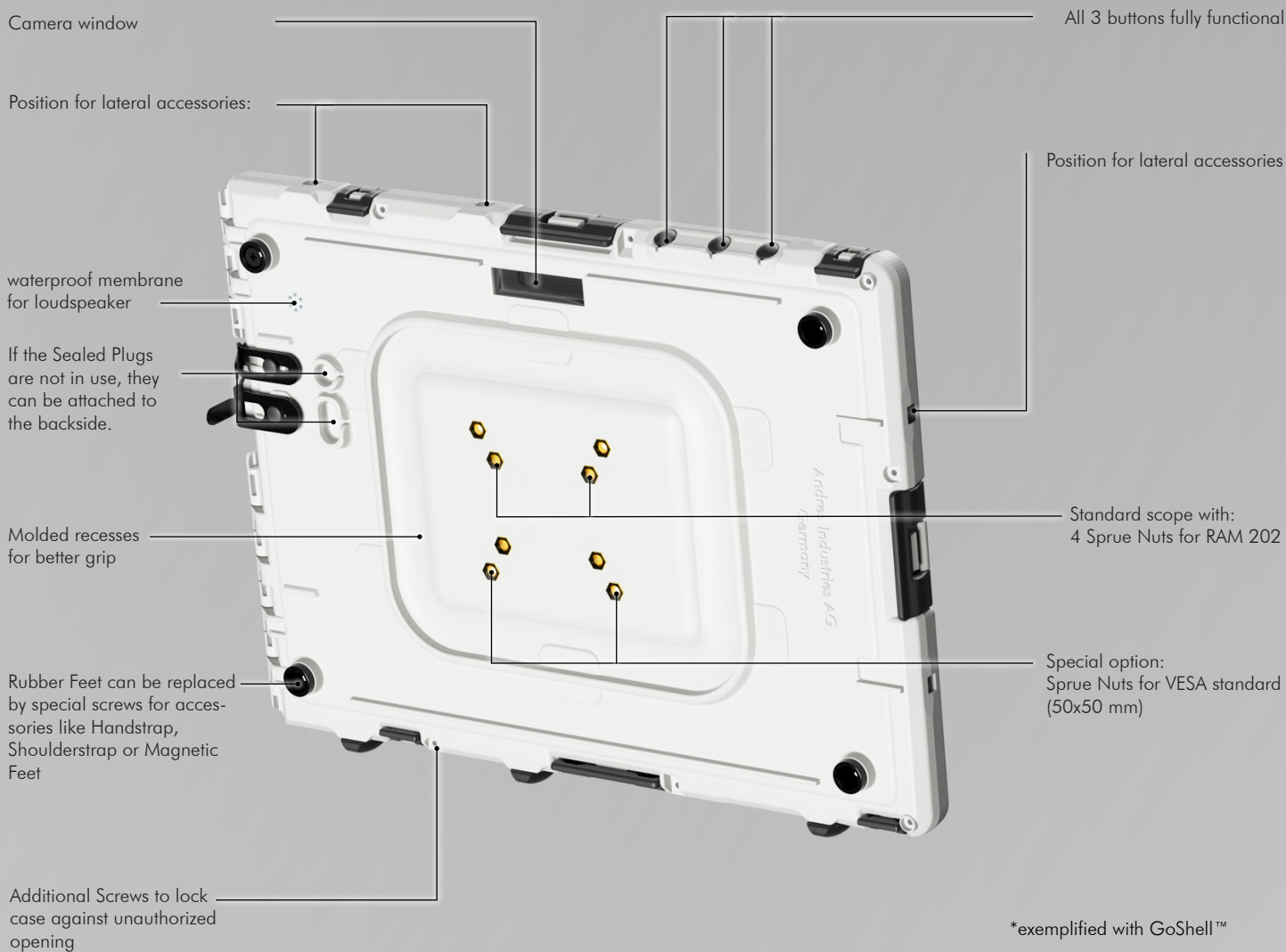
# Backside

## Many possibilities to interface

On the back of our Shell™ housings, the possibilities for expansion and adaptation become clear: These have been continuously improved during the development of the aiShell™ product series and have proven themselves in many years of practical use. This means that you can benefit from a wide range

of accessories right from the market launch of a new Shell™ case. All accessories are available for both the industrial and other professional use as well as for private applications. If the materials used are not suitable for your specific purpose, they can be replaced (e.g. we can incorporate high-performan-

ce polymers that can withstand high temperatures and/or aggressive solvents). For the interfaces on the back of Shell™ we can develop accessories to meet a wide range of customer specific requirements and avoid the costly development of specific enclosures.



## Shell™ models

### aiShell™ mini+

Suitable for Apple iPad mini4, lockable with special screws to protect against unauthorized opening, front and rear camera window Waterproof connection for underwater power supply, aiShell™ Car Cradle or aiRack-10 available as accessories.

No. (see table)

### aiShell™ mini 5

Like aiShell™ mini + but suitable for Apple iPad mini 5th Gen..

No. (see table)

### aiShell™ 9.7

Our aiShell™ 9.7 is the new edition of the aiShell™ Air. Suitable for Apple iPad Air 2, iPad Pro 9.7", iPad 2017 (5th Gen) and iPad 2018 (6th Gen).

No. (see table)

### aiShell™ 10

Like aiShell™ 9.7 but suitable for Apple iPad 10.5", 10.2" and iPad Air 3. Gen.

No. (see table)

### aiShell™ 12.9

Like aiShell™ mini+ but suitable for Apple iPad 12.9" 1. and 2. Gen.

No. (see table)

### GoShell™ 10

**NEW**

Suitable for Microsoft Surface Go and Surface Go 2, lockable with special screws to prevent unauthorized opening, front and rear camera window. Waterproof connection for underwater power supply, GoShell™ Car Cradle or Go-Rack-10 available as accessories.

No. (see table)

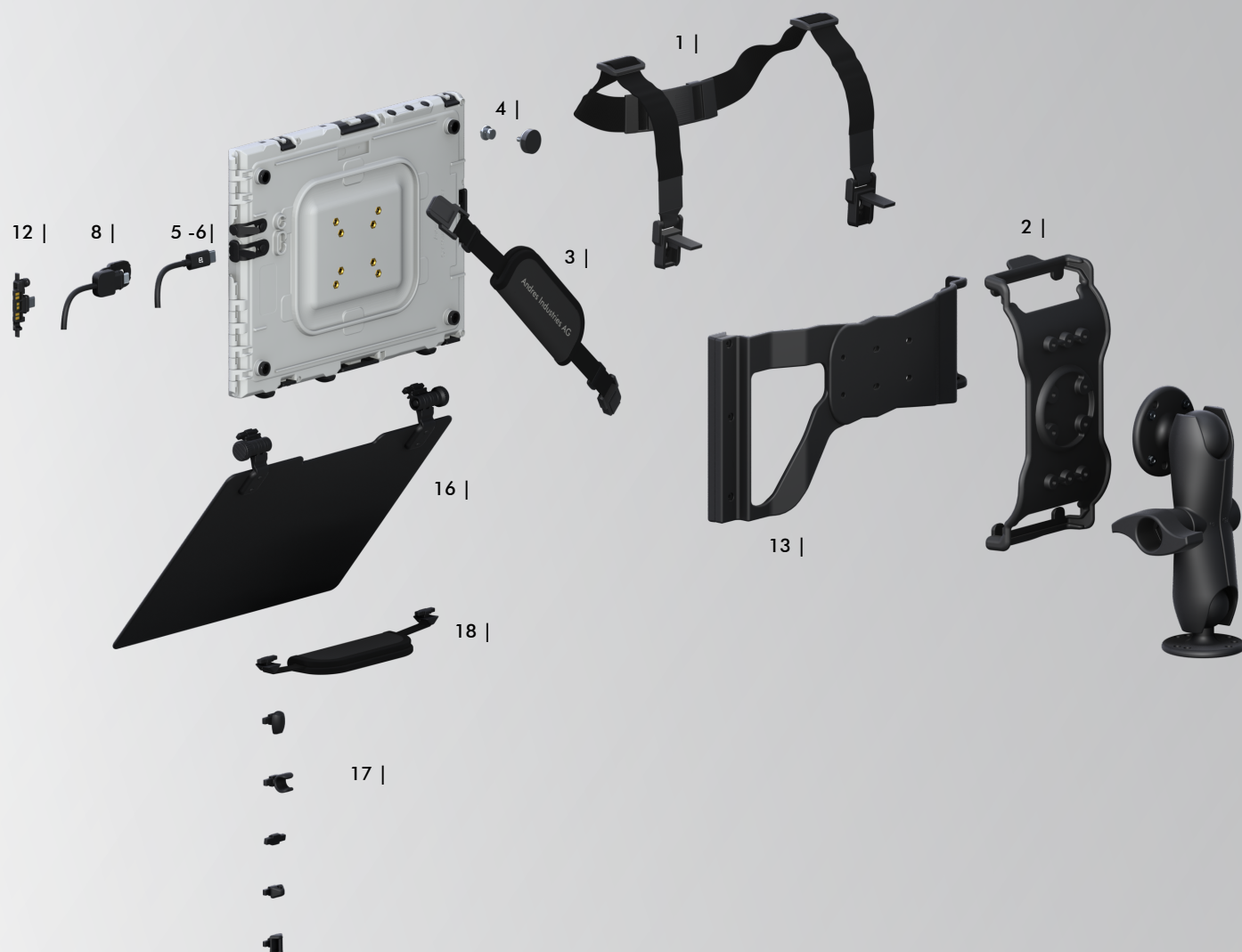


# Shell™ Concept

Shell™ cases are waterproof and shock resistant. There is no other system solution for Microsoft Surface Go or Apple iPads which offers such expandability. The standard scope of

delivery of Shell™ satisfies the needs of private users. Professionals tend to adapt their Shell™ with suitable accessories. These are available for almost every possible application. If you

are facing extraordinary tasks, we can develop and produce custom-made solutions with special materials and/or tailored features for you.



## Accessories for Backside

### 1 | Shell™ shoulderstrap

On the backside of Shell™ an easily removable Shoulderstrap can be attached in various positions. If necessary, 2 Shoulderstraps can be combined. Shell™ can thus be worn like a hawkers' tray.  
**No. 291015**

### 2 | Quicksnapper

If you want Shell™ to be securely mounted while being easily removable, the Quicksnapper is our reliable solution. The Quicksnapper can be screwed directly to a table or a wall. Alternatively, it can be fixed to a RAM-Mount (see pages 6).

#### Quicksnapper 10

for GoShell™ 10 / aiShell™ 9.7 / Air / 10.5

**No. 295011**

#### Quicksnapper mini

not illustrated | for aiShell™ mini/mini+

**No. 291020**

#### Quicksnapper 12.9

not illustrated | for aiShell™ 12.9

**No. 291120**

### 3 | Shell™ handstrap back

This length-adjustable strap with its 2 attachment points can be connected to each of the 4 Sprue Nuts. It can thus be used either alone or in combination with the Shoulderstrap. You can remove it quickly and easily in the same way as the Shoulderstrap.  
**No. 293007**

### 4 | Magnetic Feet (Set of 4)

We have developed Magnetic Feet to widen the scope of applications for Shell™. After removing the standard Rubber Feet, the Magnetic Feet can be mounted on the back. They are strong enough to securely attach Shell™ to ferromagnetic surfaces.  
**No. 293009**



## Charging Options

### 5 | Standard Connector

A USB-C standard charging cable is part of the standard scope of delivery. With such a cable it is possible to synchronize and charge your Microsoft Surface Go in the GoShell™. **No. 350117** (colors black or white)

### 6 | Standard (Lightning Connector)

The original charging cable for iPads can be used for charging process (not included). During the process of charging the system is not waterproof. Only after removing the connector and sealing the case with a plug it is waterproof again. For daily charging the process is viable.



6 |



### 7 | Rack-10

With the Car Cradle Connector attached to each Shell™ up to 10 devices can be charged simultaneously in a 19"-rack. It is suitable for all standard server racks. Up to 2 racks can be installed on 1 floor due to the low installation depth of only 250mm. Therefore, large cabinets can accommodate up to a total of 100 charging bays. If desired, individual racks can be delivered as pull-out drawers. This facilitates inserting and removing. The Rack has an integrated power supply unit that allows to charge every device with up to 2A.

**Go-Rack-10 for GoShell™ No. 350129**  
(available from the beginning of 2021)  
**aiRack-10 for aiShell™** not illustrated  
**No. 299090**

### 8 | GoShell™ Waterproof Connector

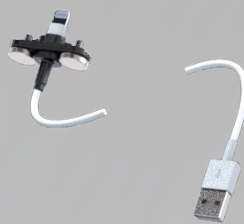
If the GoShell™ is required to remain waterproof during charging, this special connector is used. While one end is connected waterproof to the case the other end is a standard USB plug. No special tools are needed. This solution is often used by sailors because they only need to adjust the connector once per day. As the standard USB-plug is not waterproof, it must be placed in a protected environment. **No. 350130**

### 9 | aiShell™ Charging Connector

If the iPad has to be charged waterproof in the case, a Charging connector can be used. The Charging Connector will be screwed onto the case and contains an USB plug by which you can connect Apple adapters with. You don't need any extra tools. The solution is often used by sailors because you only need to adjust the connector once a day. The USB plug at the end of the cable is not waterproof.

with 1m cable **No. 291035**  
with 2m cable **No. 291036**

9 |



### 10 | CPS-Lighter 15,5W

The CPS-lighter (car power supply), a universal car and truck charging adapter (5V/3.1A 15,5W) for charging and operating devices with USB compatible power supply. The adapter fits into the standard connection of the cigarette lighter in the car or truck. The charging function can be controlled via the built-in LED. For safety, the adapter has a built-in surge protector. **No. 294022**



### 11 | CPS-Direct

The CPS-Direct (car power supply), a flat power USB socket (12-24V DC / 5V DC 3000 mA) with integrated voltage converter suitable for the connection to the 12-24V wiring system of cars, trucks, buses, caravans and boats and is suitable for charging and operating smartphones, navigation devices, digital cameras, mobile phones, MP3 players, e-readers and photo cameras and all kinds of tablets, as well as other electronic devices that can be charged via USB and need a high charging current. We tested it and recommend it for charging the iPad in the Car Cradle. **No. 294021**







## Car Cradle – charging and mounting merged

The solution is especially made for delivery drivers who need to plug and unplug the case several times a day. If the Shell™ is equipped with the Car Cradle Connector it can be simultaneously charged in the Car Cradle. With

this solution the case does not have to be opened and stays waterproof under any circumstance. Thus the mounting merged into a charger.

### 12 | Car Cradle Connector

After removing the waterproof plugs covering the openings of USB port and headphone jack, the Car Cradle Connector can be attached (no tools required). With this connector, the case can be charged while remaining completely waterproof. This opens many applications for devices in industry, transport and other sectors. While the connector is attached, your device can be charged in the Car Cradle or the aiRack-10/Go-Rack-10. With the Car Cradle Connector in place synchronizing by USB and using the headphone jack is no longer possible.

not illustrated | for GoShell™ No. 350126  
(available from end 2020)  
for aiShell™ No. 291076

### Car Cradle Connector Ultra Rugged

The robust Docking Connector has no cable. Two gold-plated contacts enable the charging function. The connector is fixed directly to the aiShell™ by means of screws and can only be used in conjunction with the aiShell™ Car Cradle or the aiRack. for aiShell™ No.: 291075



### 13 | Car Cradle

The Car Cradle is especially useful for drivers who need to plug and unplug their device frequently during the day. If Shell™ is equipped with the Car Cradle Connector [7] it can be automatically charged in the Car Cradle. With this solution the case does not have to be opened and consequently always stays waterproof. Like the Quicksnapper, the Car Cradle can either be screwed directly to walls/tables or it can be mounted with a RAM-202 or many other RAM-Mounts (see page 10). RAM-Mounts are not included in the standard scope of delivery.

for GoShell™  
with 1 m cable length: No. 350120  
(available from end 2020)  
with 1.8 m cable length: No. 350122  
(available from end 2020)

with 3m cable length: 350124  
(available from end 2020)

for aiShell™ 10.5, Air, 9.7, mini und mini+ | not illustrated  
with 1 m cable length: No. 291094  
with 1.8 m cable length: No. 291096  
with 3 m cable length: 291098

for aiShell™ Pro 12.9 | not illustrated  
with 1 m cable length: No. 291085  
with 1.8 m cable length: No. 291084  
with 3 m cable length: No. 291088



14 | Car Cradle incl. Connector  
Same as item 8 but including Car Cradle Connector

for GoShell™ 10 | not illustrated  
with 1 m cable length: No. 350121  
(available from end 2020)  
with 1.8 m cable length: No. 350123  
(available from end 2020)  
with 3 m cable length: 350125  
(available from end 2020)

for aiShell™ 10.5, Air, 9.7, mini und mini+  
with 1 m cable length: No. 291095  
with 1.8 m cable length: No. 291097  
with 3 m cable length: 291099

for aiShell™ Pro 12.9 | not illustrated  
with 1 m cable length: No. 291086  
with 1.8 m cable length: No. 291087  
with 3 m cable length: No. 291089

### 15 | Car Cradle Ultra Rugged

In the past, extremely strong vibrations, e.g. when used in mining or in unsprung vehicles, led to a reduced charging current. For these extreme requirements we have now developed the Ultra Rugged series. Even with strong vibrations it delivers a charging current of 2A and thus ensures the charging of the iPad during operation. Existing iPads can be retrofitted with the Ultra Rugged System. Both the Car Cradle and the Connector are exchanged. Since the new system works with an increased charging voltage of 9V, older systems could be damaged if they are operated in an Ultra Rugged Car Cradle. Therefore we recommend to always renew all existing systems at the same time to avoid confusion.



aiShell™ Car Cradle Ultra Rugged incl. Connector | not illustrated

for aiShell™ Pro 10.5, 9.7, Air, mini und mini+  
with 1m cable length: No. 291131  
with 1.8 m cable length: No. 291133  
with 3 m cable length: No. 291135

### 16 | aiShell™ Charging Clip

The Charging Clip is the smaller alternative to the Car Cradle and makes it possible to charge the device in the aiShell™ via Car Cradle connector.

for aiShell™ mini, Air, 9.7, 10 und 12.9  
No. 291032

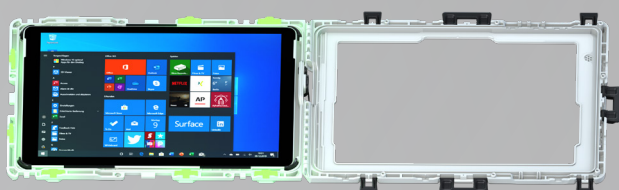


## Lateral Accessories

With the lateral accessories, Shell™ Cases can be accessorized in a total of 7 positions. A Pen Holder, a Rubber Feet or a Blind Plug can be attached to each of these positions. When purchasing a Shell™ 2 Pen Holders, 3 Rubber Feet and 7 Blind Plugs are already included in the standard scope of delivery. No tools are required for the installation. Special plugs can also be developed on request which fit these 7 positions.



Open the Shell™



Insert the side accessory in one of the seven possible positions

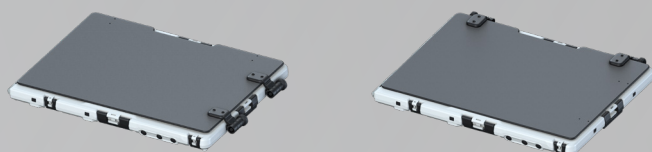
### 17 | Sunshade

Another lateral accessory is the Sunshade. Closed it serves as display protection. As it can be adjusted to any angle, it also serves as sunshade and as table stand. It can also be locked in place by turning two rotating knobs.

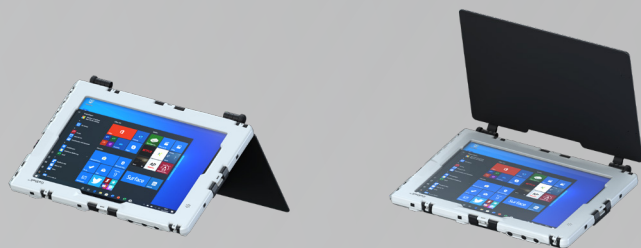
**GoShell™ Sunshade** for GoShell™ 10 No. 350116

**aiShell™ Sunshade 10** for aiShell™ 10 No. 291019

**aiShell™ Sunshade 9.7** for aiShell™ 9.7 No. 291018



Display Cover



Desk Stand

Sonnenschutz

### 18 | Shell™ handstrap side

The new length-adjustable Side Handstrap allows even more ergonomic use of Shell™. It can be combined with other lateral accessories.

No. 290348



### 19 | Accessories kit

The set of Lateral Accessories includes the following: 3 Rubber Feet, 2 Pen Holders, 1 Blind Plug, 1 Spring Hook Eyelet and 2 Handstrap Buckles.

for GoShell™ No. 350114

for aiShell™ 9.7 and 10.5

| not illustrated | No. 290071



Spring Hook Eyelet



Blind Plug



Handstrap Buckle



Rubber Foot



Pen Holder

## Accessories for the front

### 20 | aiShell™ mini Displaycover

The Displaycover is an additional protection. If the Displaycover is not needed to protect the screen it can be snapped on the back of the case to avoid losing it. No. 291030



Shell	aiShell™mini	aiShell™mini+	aiShell™ mini 5	aiShell™ Air
suitable for	iPad mini 1-3 (Discontinued model)	iPad mini 4 iPad mini 2019 (5. Gen.)	iPad mini 5 (2019)	iPad Air (2)  iPad Pro 9.7"  iPad 2017 (5. Gen.)  iPad 2018 (6. Gen.)
	A1432, A1454, A1455, A1489 A1490, A1491 A1599, A1600	A1538, A1550, A2124, A2125, A2126, A2133	A2124, A2125, A2126, A2133	A1893, A1954, A1822, A1823, A1673, A1674, A1675, A1566, A1567
waterproof/shock resistant	IP67 (waterproof up to 1m) / MIL-STD-810G 4.6.5 Procedure IV - Transit Drop (military grade)			
dimensions (mm)	222×159×22	222×159×22	222×159×22	265×192×22
weight (g)	235	235	235	315
case material	ABS Plastik			
matte foil	optional	optional	optional	optional
Standard foil	optional	optional	optional	optional
Hybrid glass	optional	optional	optional	–
black	291000	294000	297000	–
white	291001	294001	297001	280002
blue	291070	294003	297003	280004
yellow	291050	294004	297004	280005
red	291060	294006	297006	–
olive green	291040	–	297002	–
coyote	On request			
	Included in delivery			
	–			
	–			
	–			
	Optional accessories			
RAM - B/C - 202U	optional	optional	optional	optional
aiShell™ Car Cradle	–	optional	optional	optional
aiShell™ Car Cradle mini	optional	optional	optional	–
GoShell™ Car Cradle	–	–	–	–
GoShell™ Car Cradle Connector	–	–	–	–
aiShell™ Car Cradle Connector	–	optional	optional	–
aiShell™ Car Cradle Connector mini	optional	optional	optional	–
aiShell™ Car Cradle ultra rugged	optional	optional	optional	optional
CPS–direct	optional	optional	optional	optional
CPS–lighter 15.5 W	optional	optional	optional	optional
aiRack–10	optional	optional	optional	optional
GoRack–10	–	–	–	–
Quicksnapper mini	optional	optional	optional	–
Quicksnapper 10	–	–	–	optional
Quicksnapper 12.9	–	–	–	–
aiShell™ Charging Connector	optional	optional	optional	optional
GoShell™ Waterproof Connector	–	–	–	–
Shell Shoulderstrap	optional	optional	optional	optional
Shell Shoulderstrap inkl. emergency opening	optional	optional	optional	optional
Shell Handstrap back	optional	optional	optional	optional
Shell Handstrap side	–	–	–	–
aiShell™ mini Displaycover	optional	optional	optional	–
aiShell™ Sunshade 10	–	–	–	–
aiShell™ Sunshade 9.7	–	–	–	–
GoShell™ Sunshade	–	–	–	–
Magnetic Feet Set	optional	optional	optional	optional
aiShell™ Charging Clip	–	–	–	optional
GoShell™ Accessory Kit	–	–	–	–
aiShell™ Accessory Kit	–	–	–	–

The article numbers in the table refer to the standard version with glossy display foil  
If desired, this can be replaced by a matte film. To do this, add the suffix „-m“ to the desired item number.



Shell	aiShell™ 9.7	aiShell™ 10	aiShell™ 12.9	GoShell™ 10
suitable for	iPad Air 2  iPad Pro 9.7"  iPad 2017 (5. Gen.)  iPad 2018 (6. Gen.)	iPad Pro 10.5"  iPad Air 2019 (3. Gen.)  iPad 7 10.2" 2019 (7. Gen.)  iPad 2020 (8. Gen.)	iPad Pro 12.9" 1. and 2. Generation	Microsoft Surface Go Surface Go 2
	A1566, A1567 A1673, A1674 A1675, A1822 A1823, A1893 A1954, A1474, A1475, A1476	A1701, A1709, A2152, A2123, A2153, A2154, A2197, A2200, A2198, A2270, A2428, A2429, A2430	A1670, A1671, A1584, A1652	
waterproof/shock resistant	IP67 (waterproof up to 1m) / MIL-STD-810G 4.6.5 Procedure IV - Transit Drop (military grade)			
dimensions (mm)	256×192×22	276×199×21	330×245×22	272×198×22
weight (g)	315	342	466	348
case material				
matte foil	optional	optional	optional	-
Standard foil	optional	optional	optional	-
Hybrid glass	optional	optional	-	optional
black	281001	298000	-	350101
white	281002	298001	291101	350102
blue	281004	298003	-	350104
yellow	281005	298004	-	350105
red	-	298005	291105	350106
olive green	281003	-	-	350103
coyote	On request			
	Included in delivery			
	Penholder	-	-	Penholder
	Blindplugs	-	-	Blindplugs
	Standing Foot	-	-	Standing Foot
	Optional accessories			
RAM - B/C - 202U	optional	optional	optional	optional
aiShell™ Car Cradle	optional	optional	optional	-
aiShell™ Car Cradle mini	-	-	-	-
GoShell™ Car Cradle	-	-	-	optional
GoShell™ Car Cradle Connector	-	-	-	optional
aiShell™ Car Cradle Connector	optional	optional	optional	-
aiShell™ Car Cradle Connector mini	-	-	-	-
aiShell™ Car Cradle ultra rugged	optional	optional	optional	optional
CPS-direct	optional	optional	optional	optional
CPS-lighter 15.5 W	optional	optional	optional	optional
aiRack-10	optional	optional	-	-
GoRack-10	-	-	-	optional
Quicksnapper mini	-	-	-	-
Quicksnapper 10	optional	optional	-	optional
Quicksnapper 12.9	-	-	optional	-
aiShell™ Charging Connector	optional	optional	optional	-
GoShell™ Waterproof Connector	-	-	-	optional
Shell Shoulderstrap	optional	optional	optional	optional
Shell Shoulderstrap inkl. emergency opening	optional	optional	optional	optional
Shell Handstrap back	optional	optional	optional	optional
Shell Handstrap side	optional	optional	-	optional
aiShell™ mini Displaycover	-	-	-	-
aiShell™ Sunshade 10	-	optional	-	-
aiShell™ Sunshade 9.7	optional	-	-	-
GoShell™ Sunshade	-	-	-	optional
Magnetic Feet Set	optional	optional	optional	optional
aiShell™ Charging Clip	optional	optional	optional	-
GoShell™ Accessory Kit	-	-	-	optional
aiShell™ Accessory Kit	optional	optional	optional	-

The article numbers in the table refer to the standard version with glossy display foil  
 If desired, this can be replaced by a matte film. To do this, add the suffix „-m“ to the desired item number.

# The RAM-Mount-Principle

## Mount everything to anything

With the modular RAM-Mount-System you can attach everything on anything. By combining different units, you can create the perfect mounting solution for your needs. Below pictures only show a few examples. In general, RAM-Mount consists of the following components which can be combined freely. RAM-Mounts are available in different sizes. For Shell™

we recommend units with C-Ball but in particularly harsh environments (e.g. if strong vibrations is present) D-Ball mounts might be necessary. We are happy to support you in finding the best solution for your application.

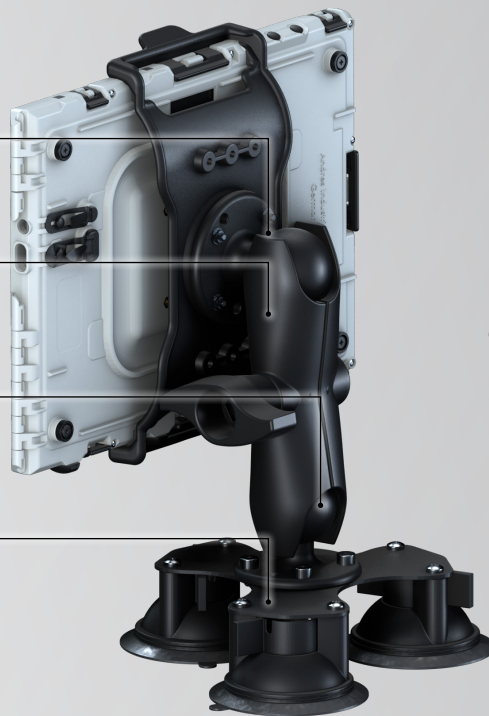
**Mounting Adapter:**  
e.g. Quicksnapper

**Upper Base:**  
e.g. RAM-202, can be screwed to directly

**Mid Base:**  
e.g. RAM-201.  
available in various lengths

**Lower Base:**  
e.g. RAM-202.  
There are many different units e.g. to connect with pipes.

**Suction foot unit:**  
e.g. RAM-224-3 in  
combination with RAM-202



## No-Drill Vehicle Mounts

### Vehicle Mounts not requiring drilling

The units portrayed below are perfectly suitable to mount the Shell™ in a vehicle without drilling. This is done by using attachment points that are already available in the vehicle (e.g. the fixture of the passenger seat). There are plenty of possibilities to mount these units in vehicles.



tripod vehicle-mount  
**RAM-316-3-202U**  
629–807 mm  
No. 498805



robust vehicle-mount:  
**RAM-316-HD-18-202U**  
629–807 mm  
No. 8900787  
**RAM-316-HD-202**  
476–654 mm  
No. 404745



simple vehicle-mount:  
**RAM-316-2U**  
457 mm  
No. 498808  
**RAM-316-1-24-202**  
610 mm  
No. 498806



# Overview of C-Ball-RAM-Units

Connection possibilities on Shell™ backside



RAM-201-D  
long connection  
piece  
No. 303305



RAM-201  
medium connecti-  
on piece  
No. 303405



RAM-201-B  
short connection  
piece  
No. 303205



RAM-KNOB5L  
to lock units  
against theft.  
No. 303406

## various RAM-Mount-Bases



RAM-231-1  
25,4–31,8 mm  
pipe diameter  
No. 404514



RAM-108BU  
25,4–53,3 mm  
pipe diameter  
No. 404805



RAM-235  
19,0–31,8 mm  
pipe diameter  
No. 405200



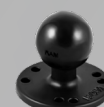
RAM-231  
12,7–25,4 mm  
pipe diameter  
No. 404513



RAM-271-12  
31,8–47,6 mm  
pipe diameter  
No. 303242



RAM-271-2  
50,8–63,5 mm  
pipe diameter  
No. 303385



RAM-202  
No. 303304



RAM-238U  
No. 404904



RAM-224-3  
Triple suction cup base  
with RAM 202  
No. 404511



RAM-118B  
102–152 mm  
pipe diameter  
No. 303127



RAM-224U  
Suction cup base  
with RAM-238  
No. 303173



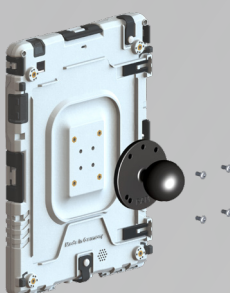
RAM-2461  
Vesa Platte  
No. 303398



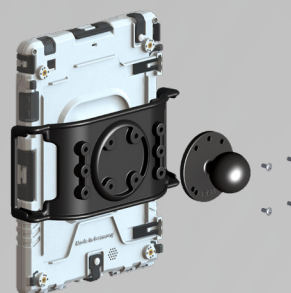
RAM-247  
25–63,5 mm  
pipe diameter  
No. 480052

## The RAM-202

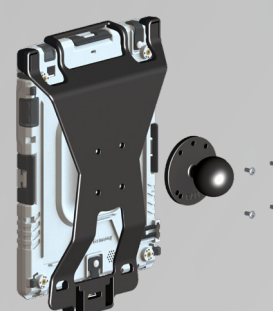
The RAM-202 can be mounted on the Shell™ itself, the Quicksnapper and the Car Cradle and is therefore an important interface to almost the entire RAM-Mount-System.



RAM-202 directly  
screwed to the back  
of the Shell™



RAM-202 screwed  
at Quicksnapper



Screwed to Car Cradle  
(Fig. similar)



**Your retailer:**

Date of issue 12/10/2020



Andres Industries AG  
CEO: Dr. Björn Andres  
Wattstr.- 11-13  
13355 Berlin/Germany

Tel.: +49 (0) 30 45 80 39 00  
Fax: +49 (0) 30 45 80 39 03  
E-Mail: [info@andres-industries.de](mailto:info@andres-industries.de)  
[www.andres-industries.de](http://www.andres-industries.de)

The protected trademarks  
are used exclusively for the  
description of functions and  
procedures.

Follow us on:

