

Quick start guide TigIR™



Switch on:

1. lift the flap and fold it back
2. device starts automatically

Switch off:

1. close flap
2. device switches off automatically

Note: If the power/video accesses are not used, they must always be sealed watertight with the cap provided for this purpose.

Operation

External power supply and video output

Battery compartment w/screw

Button 1

Press momentarily:
Display brightness, alternating

Long press:
FFC (shutter)

Press and hold for 2 sec.:
Manual calibration

Press and hold for 7 sec.:
Video mode (PAL/NTSC) off



Button 3

Press and hold: Back/Cancel

Button 4

Press and hold:
On/Off (e.g. if flap is damaged)

Press and hold in the menu:
Save

Button 1 and 3

Start menu:
Press and hold keys 1 and 3 simultaneously

Button 2

Press and hold: change filter

Press momentarily: change zoom
The zoom levels are:
TigIR-3Z: 1.6x, 2x, 4x, 8x, 11x
TigIR-6Z+: 0.8x (better overview),
1x, 2x, 4x, 6x

Filter



Cold Red

- cold is displayed in red
- heat sources black
- less glare in the night operation



Red Hot

- heat sources are shown in red
- less glare in the night operation



Cold Green

- cold is displayed in green
- reduces the risk of reconnaissance by light amplifiers



White Hot

- heat sources bright
- contrast increase
- humans and animals can be easily identified



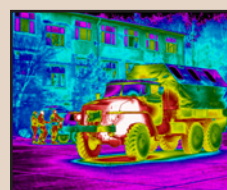
Black Hot

- heat sources are shown in dark
- picture is more natural
- easier orientation



Rainbow

- heat flow over the spectral colors
- from cold to warm: black, blue, green, yellow, red, white
- good temperature difference



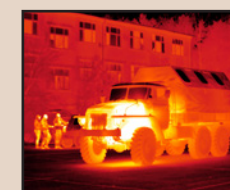
Rainbow HC

- heat flow is determined by purple
- stronger contrasts temperatures



Ironbow

- heat flow over white, yellow, orange, violet and blue
- heat sources highlighted by contrast



Glowbow

- heat sources yellow, the rest remains red
- humans and animals are highlighted



Hottest

- heat sources like humans and animals are highlighted orange, the rest remains black and white



Andres Industries AG

Service & Support

Tel.: +49 30 4580 3900
Fax: +49 30 4580 3903

E-Mail: info@andres-industries.de
Web: www.andres-industries.de



For TigIR™ from firmware 0.0.03
Stand 11/04/2020

Menu for TigIR™



AVID: Select the video output format for using the external connection output. Note: With activated video output, the OLED display is disabled.

COLL: Set the collimation here. The settings can be saved for 6 persons. You can collimate each zoom level individually with the four buttons. To change the zoom level, press and hold button 2. At the end, press and hold button 4 to save (further information on collimation see manual).

FILT: Deactivate all filters that you do not need during operations. The RH and CR filters are particularly useful at night (further information see manual).

SYM: Deactivation of the symbol display, e.g. in order to avoid affecting a video recording.

NFOV: Places the symbols in the middle of the screen. This is helpful if you want to use a scope.

BAT: When using a 16650 battery, it should also be selected in the BAT menu.

FLAP: Flap function off. This function can be deactivated to prevent the TigIR from switching itself on by accidentally opening the lens cover in the pocket. Nevertheless, it switches off automatically when the flap is closed.

REQ: Switches PIN query on or off for TigIR start.

CYC: Frequency after how many device starts the PIN is requested.

WARN: Number of device starts between pre-warning and PIN request (at device start).

NVFFC: Hereby the last manual calibration can be saved in order to obtain the optimum quality after switching on the device. It is recommended to perform this procedure every 1-2 weeks, as the sensor changes over time. However, the sensor will not be damaged if the NVFFC is not used permanently.

* Are not activated in the delivery state and can be activated in the user menu (p.12).

** TigIR-3Z™: has the zoom levels 1.6x/2x/4x/8x/11x; 2x cannot be deactivated

